

# Industrial Repair and Service

Electronic  
Mechanical  
Fluid Process  
Hydraulic



**fpepumps.com**  
**269.345.1923**

# What is Fluid Process Equipment Advantage?

It's a group of highly trained associates, backed by industry leading systems and decades of product and application knowledge working for you. As a national distributor with a local presence, **Fluid Process Equipment** fills a unique position as a full-service resource for you our customer. We provide system-wide solutions for your toughest applications, bringing together products, technical knowledge, and service and support. From assistance in the design phase, through start-up and operation, ongoing maintenance and post-sales support, and now component service and repair, Fluid Process Equipment is your partner and your competitive advantage.

The **Fluid Process Equipment Advantage** is now stronger and better than ever! Our people, systems and capabilities make the difference and will get you the **Right Product** to the **Right Place** at the **Right Time** and at the **Right Price** to keep you running efficiently and trouble-free!

**Fluid Process Equipment - People, Products, and Solutions. When Expertise Counts.**

## Locations Nationwide



- National Network of Facilities
- Single Source of Point of Contact
- Extensive Range of Repair Capabilities
- System Testing to Meet or Exceed OEM Specifications



## SunSource Family of Companies

For over 85 years, SunSource has provided quality components, designed and engineered systems, and maintained a high level of customer service to the mobile hydraulic and industrial markets. Like Fluid Process Equipment, SunSource is dedicated to further strengthening our capabilities to serve our customers by providing a broader array of repair services for industrial hydraulics, fluid process equipment and electronic components. Now that Fluid Process Equipment has joined forces with SunSource, our associates have access to even more wide ranging capabilities than before and we are committed to providing the products, services and support our customers expect, ensuring a long successful relationship.

## What is Industrial Service and Repair?

Today's workplace and factories utilize systems that range from simple to highly sophisticated. Hydraulic, electronic, and mechanical systems are everywhere – and they periodically breakdown. When that happens your system can come to a complete halt, costing you precious time and money.

**Fluid Process Equipment** and **SunSource** are your answer in these emergency situations by providing quick evaluations and expert repair of a wide range of systems and components. If it's not an emergency, our repair capabilities can keep your spares in like-new condition providing you with an insurance policy against the inevitable.

**Each repair can include the following services to ensure a hassle-free, thorough, and complete repair:**

- ✓ Free evaluations
- ✓ Experienced factory trained technicians
- ✓ 12 month operational warranty on the entire unit
- ✓ Free pick-up and delivery service in most areas
- ✓ Emergency services available
- ✓ System testing of all repairs (where applicable)
- ✓ Failure Analysis and Test Reporting
- ✓ On-Line order status tracking and reporting
- ✓ Remanufactured and surplus spares available

Using a network of **ISO 9001:2015 certified repair facilities** across the United States, Fluid Process Equipment/ SunSource has the facilities and know-how to repair your failed components. You can rest assured that we will complete your repair using factory trained, professional technicians with years of experience and an uncompromising attention to detail. We are so confident in our abilities and our processes, that we provide an industry leading **1 Year Operational Warranty** with every repair. This is just one more piece of the Fluid Process Equipment Advantage.





# Electronic Repair

## A Drives

Our Electronics Repair Department specializes in industrial drive components and their applications. We have the expertise and equipment to clean, check and dynamically test your component to replicate its malfunction, and the skilled technicians to fix it. Once the unit is approved for completion it is repaired and load tested on one of our custom built test stands to simulate your application under working conditions.



• ALLEN BRADLEY • RELIANCE • FANUC  
• MODICON • TEXAS INSTRUMENTS

**We service all major brands including:** Allen Bradley, Reliance, GE, Fanuc, Indramat, Siemens, ABB, Mitsubishi, Yaskawa and many more.



## B PLCs

PLCs have become the nerve center of the modern manufacturing facility, and it only takes one board failure to bring production to a halt. Fluid Process Equipment not only offers emergency repair service but in many cases we can offer an exchange board for immediate delivery. Whether you have an I/O card, Processor or Power Supply, our standard 3-5 day service covers all **major brands of PLCs including:** Allen Bradley, GE, Modicon, Texas Instruments, Reliance, Mitsubishi, and Siemens.

All PLCs are closed loop, system tested on a matching rack to ensure a quality repair.





• ABB • SIEMENS • YASKAWA • GE  
• TOSHIBA • XYCOM

## C HMIs, Industrial Computers, & Touch Screens

The convenience of Human Machine Interface control panels has made them indispensable on the plant floor. Unfortunately, they are one of the most fragile components in your entire system. Fluid Process Equipment has a staff of trained technicians who will clean, static-check, and test your HMI to evaluate its condition. Upon your approval, we will repair and test your unit. Every HMI repair carries our 1-year operational warranty.



## D LCD Upgrades

We offer energy-efficient LCD display upgrades for legacy CRT monitors in your facility.

**We provide expert service to the following brands:** Allen Bradley, Eaton, Fanuc, Siemens, Toshiba, Xycom and more.



## E Encoders

We have experience with over 150 brands of encoders, pulse coders, pulse generators, resolvers and tachometers. We offer complete electrical and mechanical repair on your encoders with all repairs fully tested and guaranteed.





# Electronic Repair *cont'd*



## F Welders & Weld Controls

Our certified technicians can repair your welder or weld controller and bring your equipment back up to full OEM-specifications. With our load testing capabilities and our attention to detail, we can ensure your unit's peak performance.

**We provide expert service to the following welder and weld control brands:** Miller, Lincoln, Yaskawa Motoweld, ESAB, Panasonic, OTC Daihen, WTC Weltronic, Dengensha, and Robotron.



## G Light Curtains

All light curtains are thoroughly evaluated and rigorously tested by our experienced technicians. After the initial test, every unit is then duration tested for at least 8 hours to verify the proper operation of the unit before it's returned to you.

**Common brands include:** STI, Sick Optic, Banner, Dolan Jenner, and many more.



## H Teach Pendants

When your teach pendants fail, you need them repaired fast so your vital equipment isn't sitting idle any longer than necessary. We system test every teach pendant repair on the matching robotic controller to ensure proper operation. We stock many replacement membranes, E-stops, and displays for prompt service.



# ISO 9001-2015 Certified

## I Power Supplies





A failure in a power supply can stop an entire line. Rely on Fluid Process Equipment to clean, static-check, and load test your power supply. Upon your approval, repair time is usually 10 days or less and emergency service is always available.



## J Robotics Repair

Fluid Process Equipment industrial repair has over 20 robotic manipulators and controllers to be able to system test your robotic components. Devices such as teach pendants, servo amplifiers, power supplies, and control boards are closed loop system tested on the exact same type robotic system that you use in your manufacturing process. This allows us to not only verify that the original problem with the unit has been corrected, but to also verify that all other working parameters are correct.

### A Sample of the Robots We Service

					
					
ABB S2	Comau C3G	Fanuc RJ	Kawasaki FS Series	Kuka KR 150	Motoman ERC
ABB S3	Comau C5G	Fanuc RJ2	Kawasaki FD Series	Kuka KR 6	Motoman MRC
ABB S4	Comau Smart 3	Fanuc RJ 3	Kawasaki M Series	Kuka KR 15	Motoman XRC
ABB S4C	Comau Smart S2	Fanuc RJ 3iB	Kawasaki UT 150	Kuka KR 30	Motoman NX

### Our Robotic Fleet is Dedicated to Test the Following:

- CPU/Power Supplies and I/O Cards
- Servo Drives/Multi Axis Amplifiers
- Servo Motors
- Teach Pendants
- Wrist Assemblies

# Mechanical Repair

## A Gear Boxes

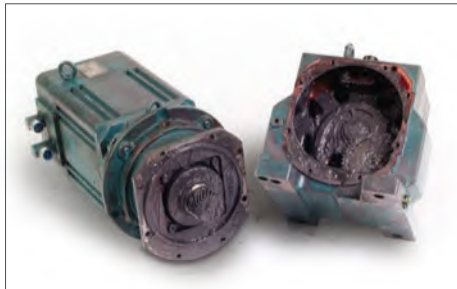
Rely on Fluid Process Equipment when it comes to remanufacturing gear boxes and rotary drives. Our customers have come to expect the same level of quality and service that we have delivered throughout three decades of hydraulic and electronic component repair.

**Common manufacturers include:** Falk, Rexnord, Flender, SEW, Dodge and many more.



FALK • SEW • ALLEN BRADLEY • YASKAWA  
• FOOTE JONES • DODGE

*Before*



*After*

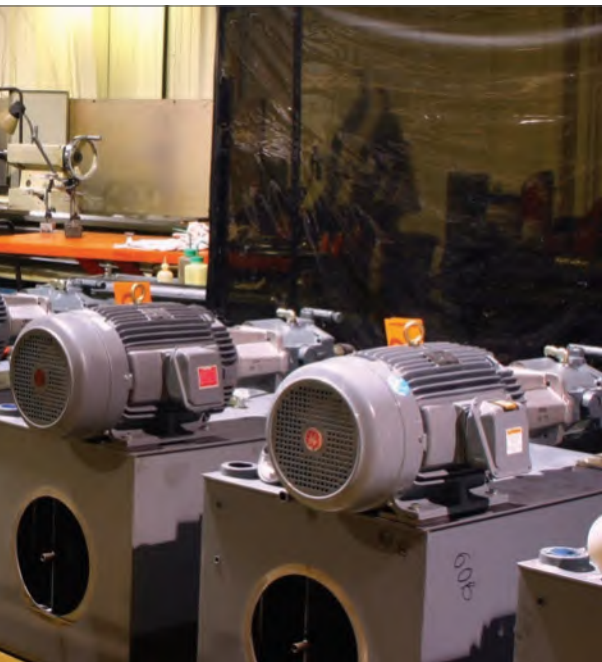


## B Spindles



As our reputation for quality and service has grown, so too have our capabilities. We have the equipment to analyze, balance, remanufacture, and test nearly every brand of spindle on the market today.





• MITSUBISHI • CLEVELAND  
• PHILADELPHIA

## C Ballscrews

Fluid Process Equipment specializes in remanufacturing precision ballscrew assemblies as well as manufacturing from print or reverse engineering. We will evaluate your ballscrew to identify possible misalignment, excessive load, or heat related issues. We pride ourselves on prompt deliveries, and emergency service is always available to help get your machine back up and running fast!



## D Servo Motors

Our Industrial Repair group has been focusing on servo and spindle motor repair as a core competency since day one. Every incoming unit is thoroughly cleaned, inspected, diagnosed, and repaired by skilled technicians. Our in-house machining and rewind capabilities allow us to provide high-quality and fast turn-around, with normal turnaround of 10 days or less on most repairs depending on the failure of the motor. All motors are closed-loop system tested, under load, to meet or exceed OEM specification prior to return and come with a service report letting you know what was repaired and our 1-year operational warranty.

*Before*



*After*



## E Gear Reducers



We're well-versed in the total repair of all types of gear reducers, gear increasers and power transmissions of every variety, be they helical, spur, worm, planetary, spiral bevel, hypoid gearboxes or traction drives. Our highly trained and experienced technicians can get your product operating back to original OEM specifications fast, reducing your downtime and eliminating the need for costly replacements, regardless of who manufactured it.

# Fluid Process Repair

**Fluid Process Equipment** and **SunSource** proudly serve the Automotive, Biofuels/Ethanol, CAFO Biogas, Chemical, Industrial, Sanitary, Food & Beverage, Pharmaceutical, Pulp & Paper, OEM, Municipal Water & Wastewater Treatment Markets.

We have several facilities across the US available to service and repair your pump and related equipment. Our repair operations are fully equipped with machinery capable of handling every step of the process, including:

- Complete Refurbishment and Reconditioning
- Pump and Motor Alignment
- Machining & Welding
- Part Reproduction for Damaged or Obsolete Part Replacement
- Dynamic Balancing
- Fabrication & Assembly

• AMPCO • BRINKMANN • FYBROC • IWAKI • IMO  
• MOYNO • SULZER • YAMADA • NOV-MISSION  
• GARDNER DENVER • NASH • SIEMENS • DRESSER

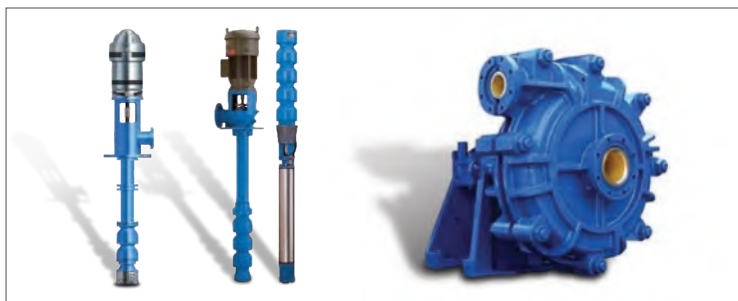
## A Fluid Process Pumps

- ANSI Pumps
- Double Suction Pumps
- Multi Stage Pumps



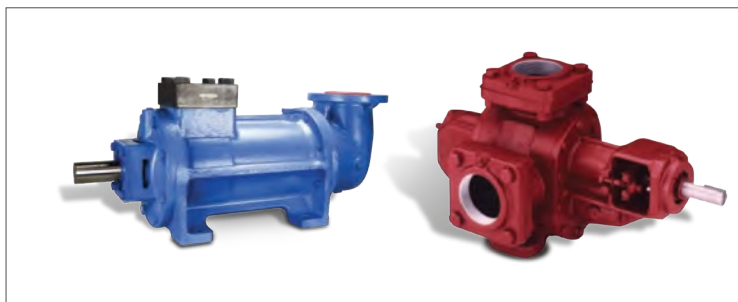
## B Vertical & Horizontal Pumps

- High Temp / Hot Oil Pumps
- Boiler Feed Pumps
- Slurry Pumps
- Vertical Turbine Pumps



## C Positive Displacement Pumps

- Progressive Cavity Pumps
- Screw Pumps
- Sanitary Pumps
- Paint Pumps

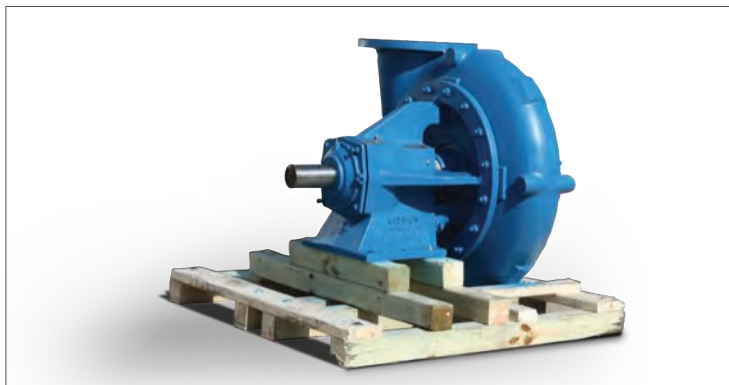


**Specializing in repair of:** Ampco, ARO, Brinkmann, Dean, Durco, Flowserve, Fybroc, Gorman-Rupp, Goulds, Hydra Cell, Ingersoll Rand, Iwaki, IMO, Knoll, Liestriz, Mono, Moyno, Peerless, Sandpiper, Scott, Sulzer, Tarby, Tuthill, Yamada, Viking, Waukesha, Wilden, and many more.

## D Centrifugal Pumps

Fluid Process Equipment has the capability to remanufacture your centrifugal pump to a like-new condition – any size, any brand. We offer complete inspection of shaft, frame, bearings, packing, stuff box, impeller, volute, and front cover to ensure a high quality repair.

**We service all brands of pumps including:** Goulds, Flowserve, Worthington, Ingersoll-Rand, Byron Jackson, Johnson, NOV - Mission, Gardner Denver, Gorman-Rupp, O'Drill-MCM.



## E Vacuum Pumps

We understand the value of keeping your equipment running, so when you are having issues with your vacuum pump, you can rely on Fluid Process Equipment to service your unit and minimize your downtime. We have expertise with the kinds of vacuum pumps found throughout manufacturing industries including rotary vane, liquid ring, scroll, piston and lobe.

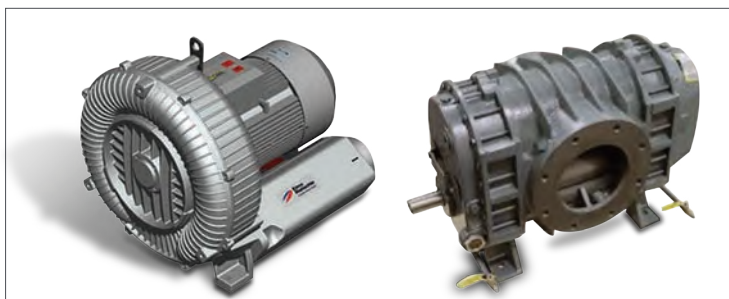
**We service all brands of pumps including:** Gardner Denver, Nash, BOC Edwards, Kinney, Leybold, Stokes, Varian, Siemens, Somarakis, and many more.



## F Blowers

Fluid Process Equipment specializes in many types of blower reconditioning, including Positive Displacement, and Centrifugal. We have in-house machining and dynamic balancing equipment to restore peak performance to your unit.

**We specialize in the repair of these brands:** Roots, Siemens, Dresser, Leybold, and many more.



### Machining



### Welding



### Sand Blasting



### Parts Washing





# Hydraulic Repair

## ISO 9001-2015 Certified

Fluid Process Equipment and SunSource team is the most complete and comprehensive hydraulic pump, motor, and cylinder repair organization in the USA.

We have over 35 years experience in the remanufacturing and repairing of hydraulic components from nearly every OEM in business over the last half century. We have developed an in-depth series of procedures to catalog, evaluate, estimate, repair, test and return ship your equipment utilizing the highest quality craftsmanship with the quickest turnaround.

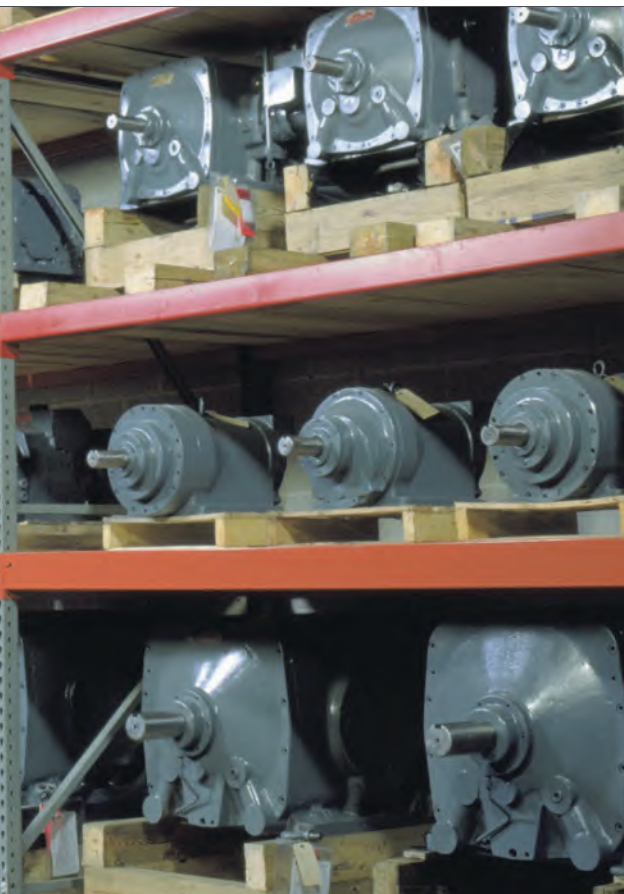


OILGEAR • VICKERS • BOSCH/REXROTH • RACINE  
• MILLER • MTS • HYDRO-LINES

### Our Process Includes:

- STEP 1:** Customer's units are assigned a unique job number and all OEM information is recorded.
- STEP 2:** Units are completely torn down by highly trained technicians for evaluation. The hydraulic technicians analyze the components to look for signs of wear, excessive heat, and contamination, in effort to hypothesize how this component failed.
- STEP 3:** Once it has been determined which parts require replacement, the parts are sourced and a quote is generated for the customer. No work is performed until Fluid Process Equipment receives approval from the customer.
- STEP 4:** Upon approval, the parts are ordered and the repairs are performed.
- STEP 5:** Unit is tested on our custom hydraulic test stands and the unit's performance is measured against OEM specifications. Units do not pass test if they do not meet OEM tolerances.
- STEP 6:** Unit is securely packaged or banded to a skid for shipment.

All parts and materials guaranteed for one full year after installation. Our workmanship and labor are unconditionally guaranteed.



• DENISON • MOOG • PARKER • PEGASUS  
• INSTRON • VICKERS TJ

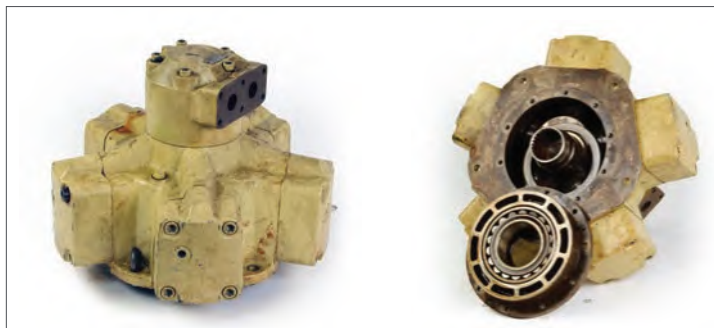
# ISO 9001-2015 Certified

## A Pumps & Motors

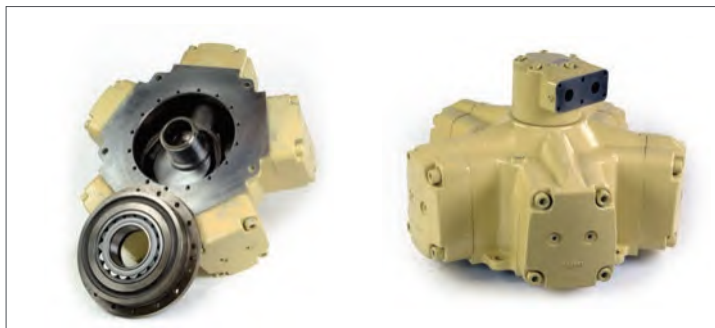
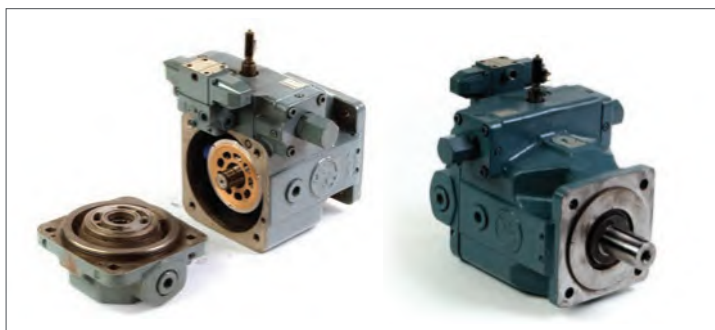
We service hundreds of hydraulic pumps every week. Every unit is completely disassembled and evaluated so that we can identify possible root causes of failure. Damaged parts are replaced or remanufactured, and the unit is rebuilt. The final product is load tested to confirm that it performs to OEM-specific standards before being painted and packaged for return.



*Before*



*After*





# Hydraulic Repair *cont'd*

## **B** OilGear Pumps



**ONE CALL GETS IT ALL!**

Our repair group is widely recognized as the aftermarket leader in Oilgear repairs and exchanges. To meet the needs of our customers, we stock hundreds of rebuilt Oilgear pumps. Most of the time we can have a rebuilt Oilgear pump on the way to you in 1-2 days, and all rebuilt exchanges carry a 2-year operational warranty.

*Before*



*After*







# ISO 9001-2015 Certified

## C Valves

Fluid Process Equipment's industrial repair team has been repairing all major brands of servo valves, proportional valves, and directional valves for over **35 years**. Our skilled technicians average over 15 years experience and will thoroughly test, evaluate, and repair your valve to OEM specifications in under 5 working days. If your need is critical, we can offer emergency turnaround. All valves are static and dynamically system tested to ensure a quality repair, complete with our 1-year operational warranty.

### — Servo Valves

*Before*



*After*



### — Directional Valves



### — Proportional Valves



# Hydraulic Repair *cont'd*

## **D** Cylinders/Actuators

Fluid Process Equipment can repair and remanufacture all of your hydraulic cylinders. Our in-house machining department cuts down the lead time of repairs significantly, and allows us to produce parts for your damaged cylinders. We have the capability to manufacture new rods, pistons, bushings, and tubes. Every cylinder we repair leaves our facilities operating like a brand new cylinder.

Our experienced technicians can repair cylinders up to 32 ft. in length and 36 in. diameter, up to 40,000 lbs. in weight. Whether it is repair work or manufacturing a new unit, fast turn around and quality work is our objective for all customers.

All incoming units are thoroughly inspected, cleaned, diagnosed, and repaired by skilled technicians, who average over 20 years of experience. A typical repair of a precision actuator includes such work as grinding and chroming the rod, honing the tube, installing new seals, calibrating the LVDT and testing the actuator with its servo valves.



*Before*



*After*





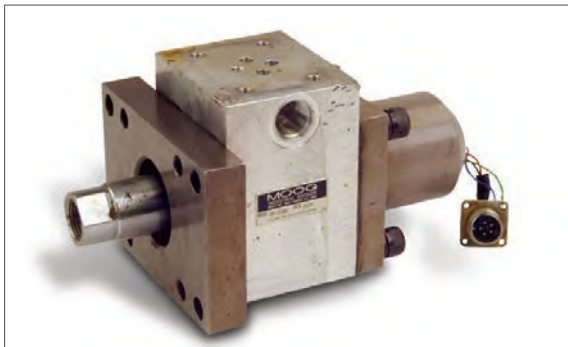


# ISO 9001-2015 Certified

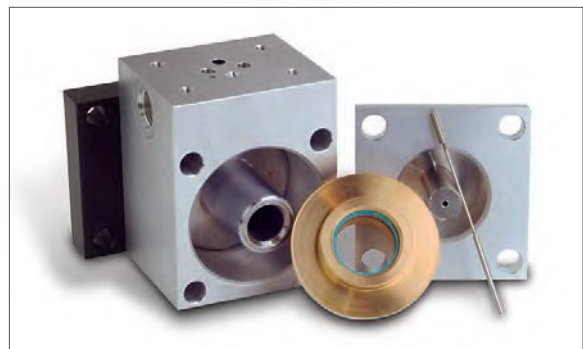
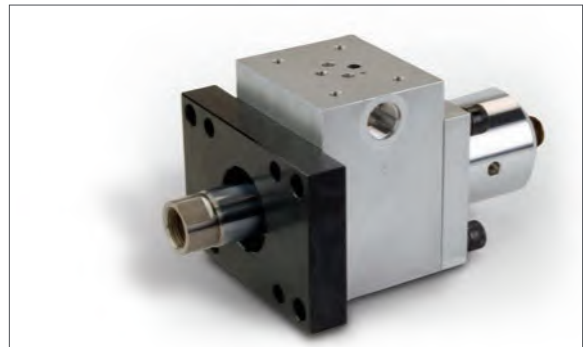
## **E** Precision Servo Actuators

Fluid Process Equipment services all makes and models of rotary and linear precision actuators. We have repaired actuators as small as 2.3 kip and as large as 250 kip for many different applications within the testing industry. All units sent in for repair are thoroughly inspected, cleaned, diagnosed and repaired by skilled technicians. Your unit will be returned in like-new condition. As with every repair at Fluid Process Equipment repair, all actuators are returned with our 1-year operational warranty.

*Before*



*After*





# Electronic, Mechanical, Fluid Process,

## Electronic Repair

Drives



PLCs



HMI's, Industrial Computers & Touch Screens



LCD Upgrades



Light Curtains



Teach Pendants



Power Supplies



Robotic Repair

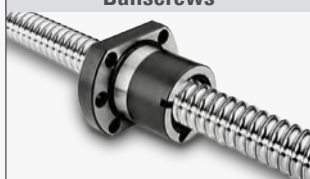


## Mechanical Repair

Gear Boxes



Ballscrews



Spindles



Pneumatics & Vacuum



## Fluid Process Repair

Fluid Process Pumps



Vertical & Horizontal Pumps



Positive Displacement Pumps



Centrifugal Pumps



## Hydraulic Repair

Pumps



Motors



Servo Valves



Directional & Proportional Valves



Also Specializing In :

- Rexroth
- DynaPower
- OilGear
- Denison
- Parker
- Vickers

# Hydraulic Repair & Service

**Brand Names Include**

**Encoder**



**Welders & Weld Controls**



## Keeping Industrial America Running!

ABB  
Allen Bradley  
Baldor  
Baumuller  
Compumotor  
Control Techniques  
Cutler Hammer  
Dynamic  
Emerson  
Eurotherm  
Fanuc

Fincor  
Fuji Electric  
GE  
Giddings & Lewis  
Inland Motor Drives  
Kollmorgen  
Lambda  
Lenze  
Indramat  
Magnetek  
Mitsubishi

Modicon  
OkumaPacific  
Reliance  
Safronics  
Scientific  
TB Woods  
Telemecanique  
Texas Instruments  
Toshiba  
Yaskawa

**Brand Names Include**

**Servo Motors**



Alcatel  
Bryant  
Cincinnati  
Desoutter  
Dodge  
Duplomatic  
Edwards  
Falk

Fellows  
Gardner-Denver  
Haskel  
Kinney  
Leybold  
Mazak  
Mori Seike  
Nash

Norgen  
Numatics  
Oerlikon  
Okuma  
Rexnold  
Ross  
Setco  
Sew-Eurodrive

SMC  
Stokes  
Sumitomo  
Tol-O-Matic  
Toyoda  
Varian

**Brand Names Include**

**Vacuum Pumps**



**Blowers**



Ampco  
ARO  
Brinkmann  
Byron Jackson  
Dean  
Dresser  
Durco  
Flowserve  
Fybroc

Gardner Denver  
Gorman-Rupp  
Goulds  
Hydra Cell  
IMO  
Ingersoll-Rand  
Iwaki  
Johnson  
Knoll

Leybold  
Liestritz  
Mono  
Moyno  
Peerless  
Roots  
Sandpiper  
Scott  
Siemens

Sulzer  
Tarby  
Tuthill  
Viking  
Waukesha  
Wilden  
Worthington  
Yamada

**Brand Names Include**

**Cylinders**



**Actuators**



Abex  
Atchley  
Bosch  
Calzoni  
Cincinnati  
Daikin  
Denison  
Dynapower

Dynex Rivett  
Hagglund  
Hanna  
HPM  
Hydro-line  
Hydura  
Milwaukee  
Moog

MTS  
Nachi  
Oilgear  
Parker Hannifin  
Pegasus  
Racine  
Rexroth  
Sumitomo

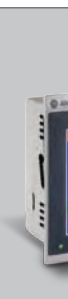
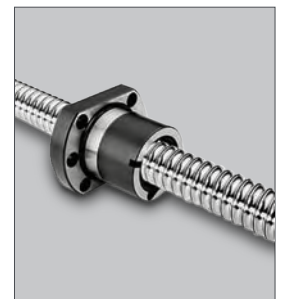
Tokimec  
Tokyo Precision  
Towler  
Voith  
Wagner  
Yuken

**FACTORY AUTHORIZED WARRANTY  
& REPAIR CENTER FOR:**

- Sauer-Danfoss
- Vickers
- Eaton
- Rotary Power
- Linde
- Hartmann
- Permco
- Kawasaki
- Staffa
- Haldex Barnes
- Poclain
- Fairfield

**fpepumps.com**  
**269.345.1923**

**People,  
Product, and  
Solutions  
when  
Expertise Counts**



**FPE** Fluid Process Equipment  
a SunSource Company